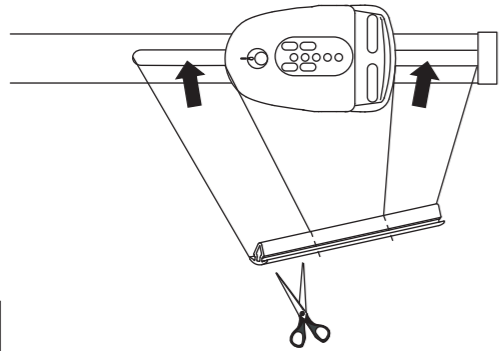
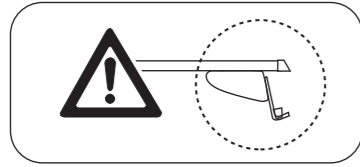


Atera® SIGNO

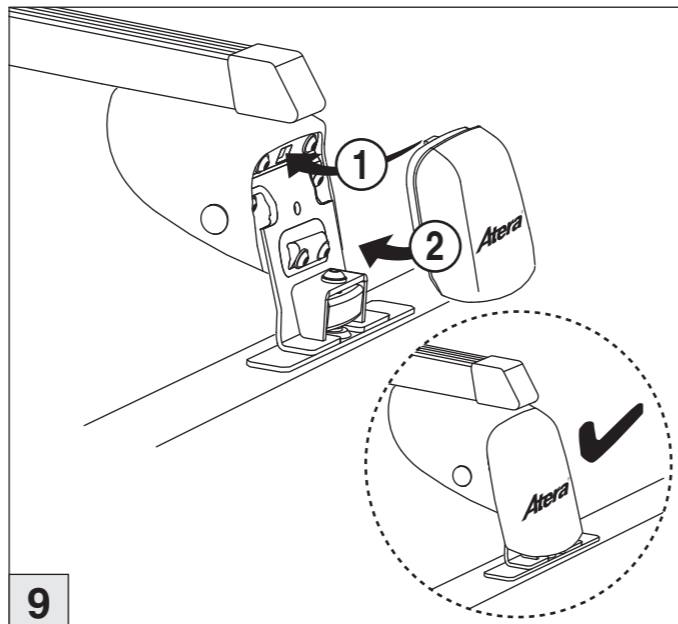
Fiat Ducato
Peugeot Boxer

7/2006–
7/2006–

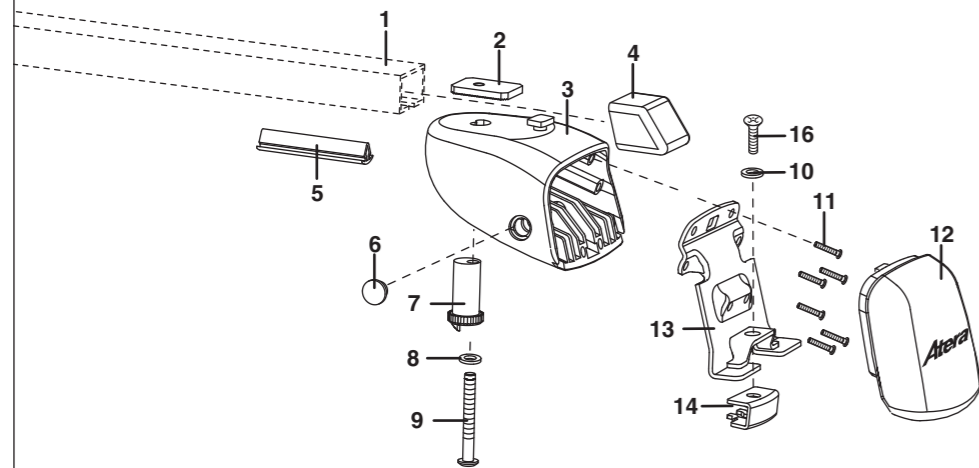
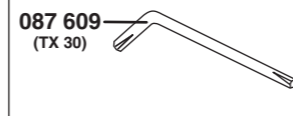
Citroen Jumper 7/2006–



8



9



- | | | |
|---------------|-------------|-------------|
| (1- 074 160*) | 7- 092 044 | 13- 095 230 |
| 2- 093 357 | 8- 087 886 | 14- 095 231 |
| 3- 092 683 | 9- 093 491 | 16- 093 710 |
| 4- 088 184 | 10- 087 866 | |
| 5- 092 043 | 11- 087 909 | |
| 6- 092 045 | 12- 092 037 | |

*Tragrohr nicht im Lieferumfang /crossbar not included

10

Atera
MADE IN GERMANY

Atera GmbH
Im Herrach 1
D-88299 Leutkirch
Servicetelefon: 0180-50 000 89
(14 ct/Min. aus dem dt. Festnetz)
E-Mail: info@atera.de

Atera® SIGNO

Fiat Ducato

07/2006–

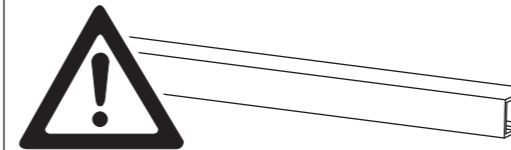
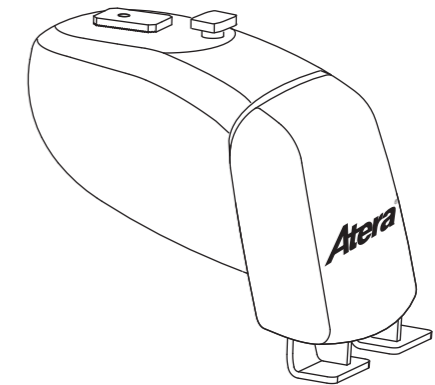
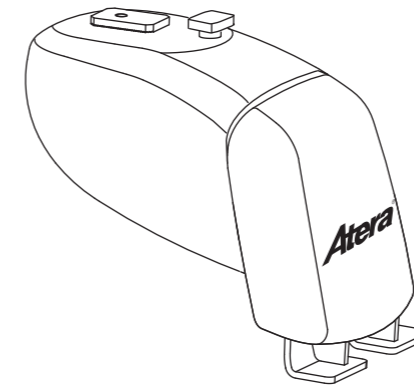
Peugeot Boxer

07/2006–

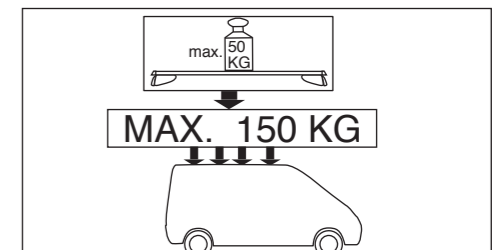
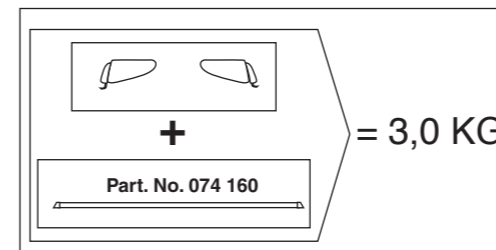
Citroen Jumper H1/H2

07/2006–

Part-No. : 044 150



Stützfüße dürfen nur in Kombination mit original Atera-Tragrohren der Länge 1600 mm (Art.-Nr.: 074 160, nicht im Lieferumfang enthalten!) verwendet werden.
Supporting legs must be used only in combination with original carrier bars made by Atera with length of 1600 mm (Art. no.: 074 160, not included).



Atera[®] SIGNO

Fiat Ducato
Peugeot Boxer

7/2006–
7/2006–

Citroen Jumper 7/2006–

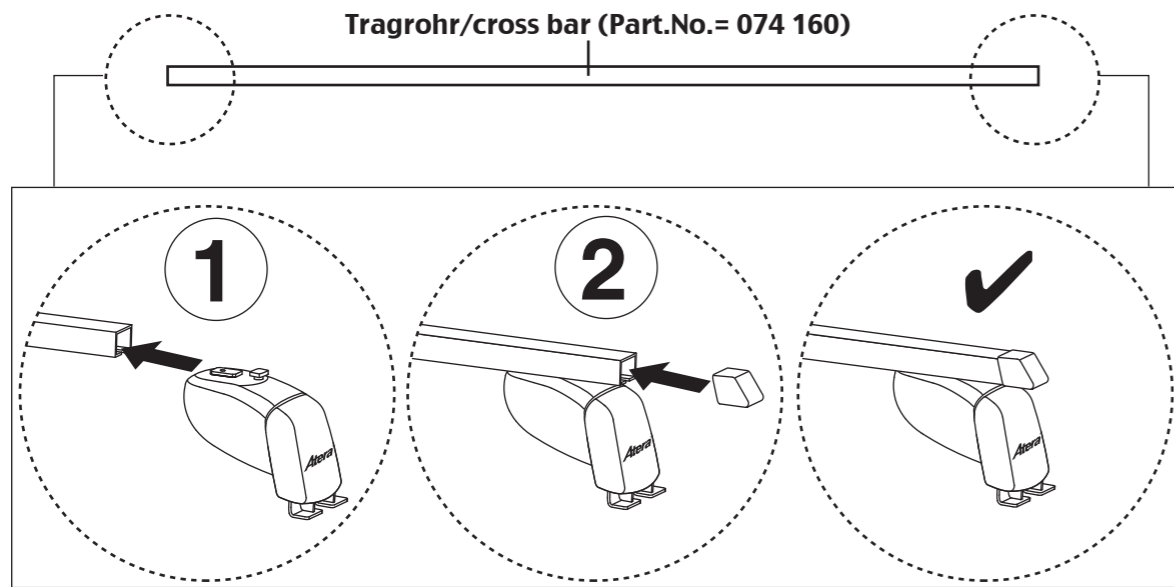
Atera[®] SIGNO

Fiat Ducato
Peugeot Boxer

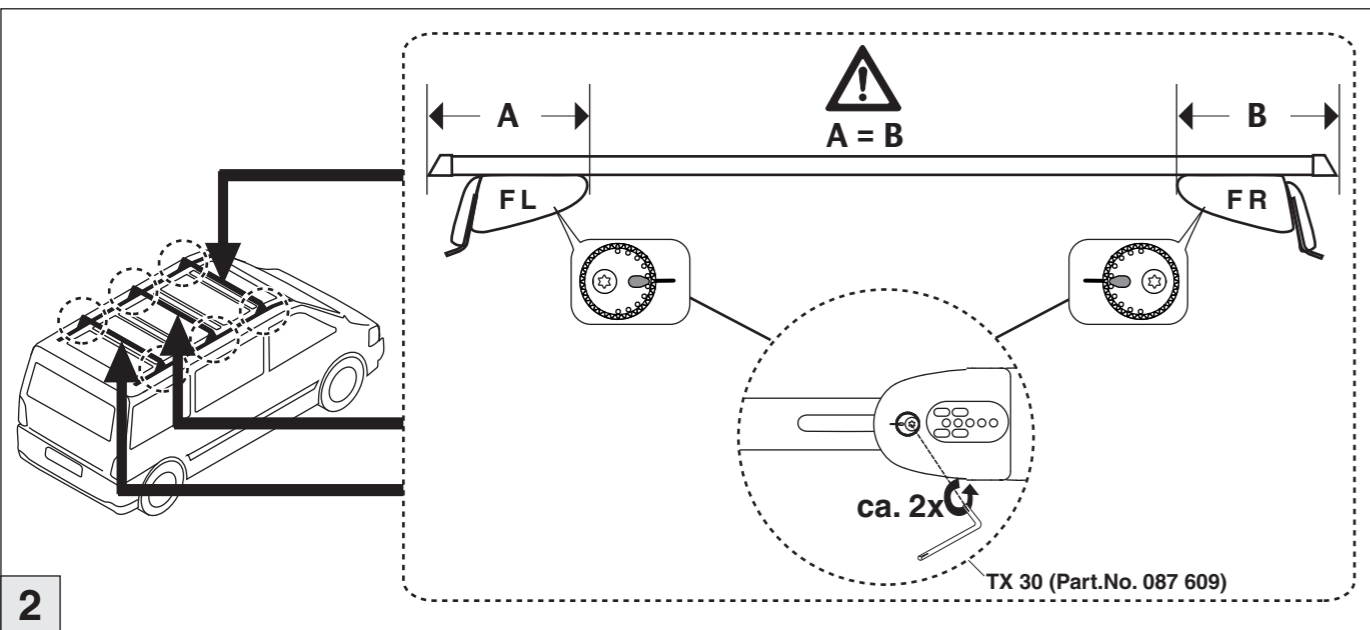
7/2006–
7/2006–

Citroen Jumper 7/2006–

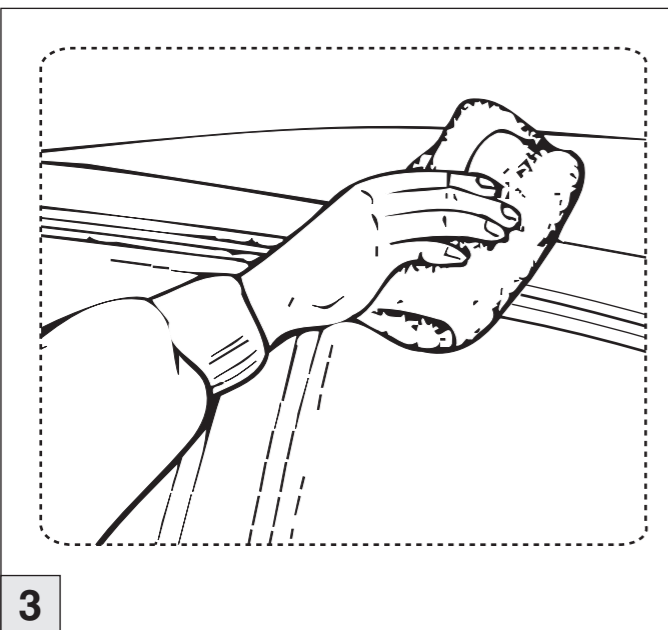
Tragrohr/cross bar (Part.No.= 074 160)



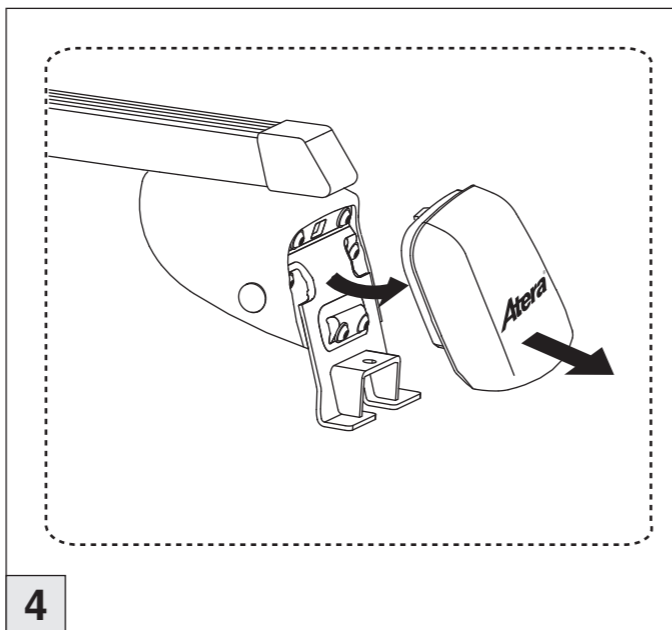
1



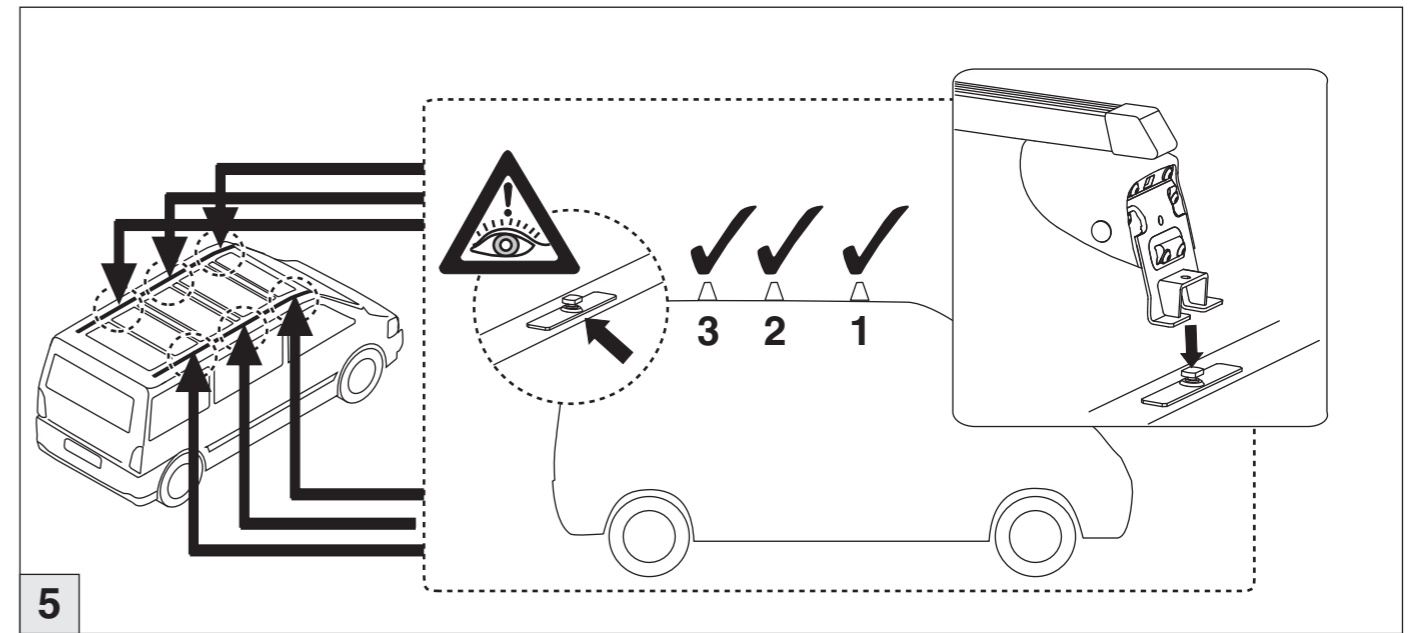
2



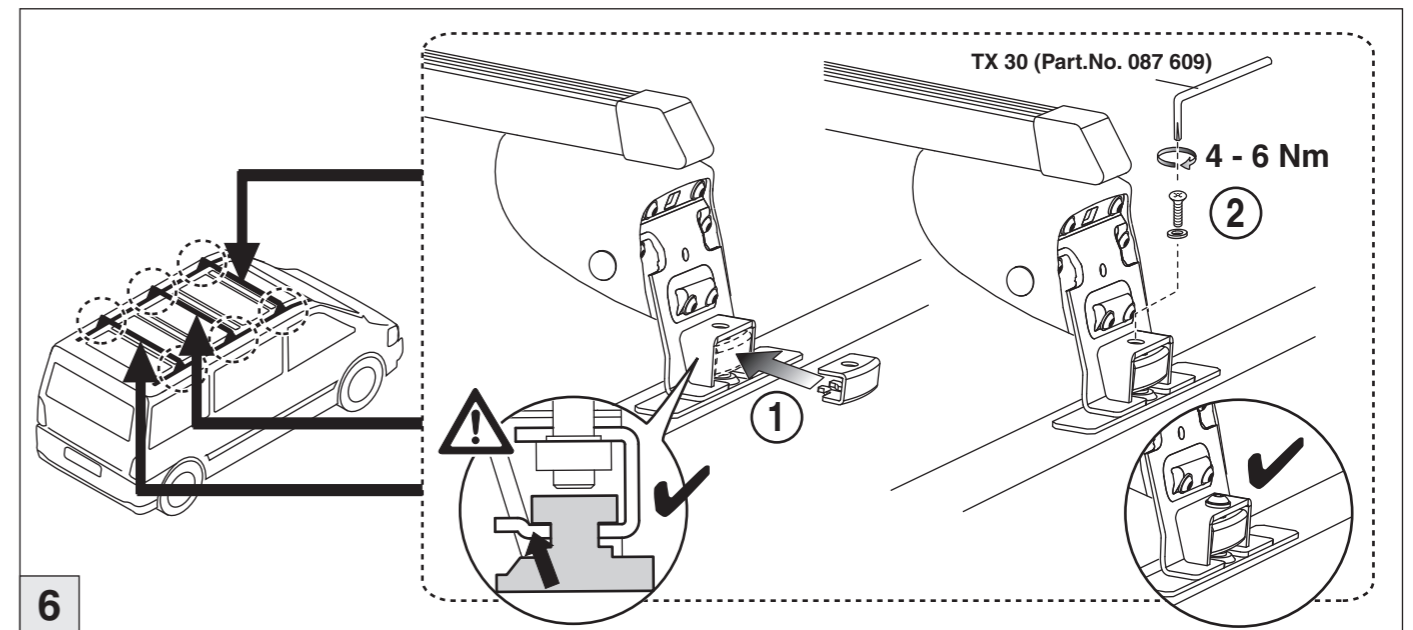
3



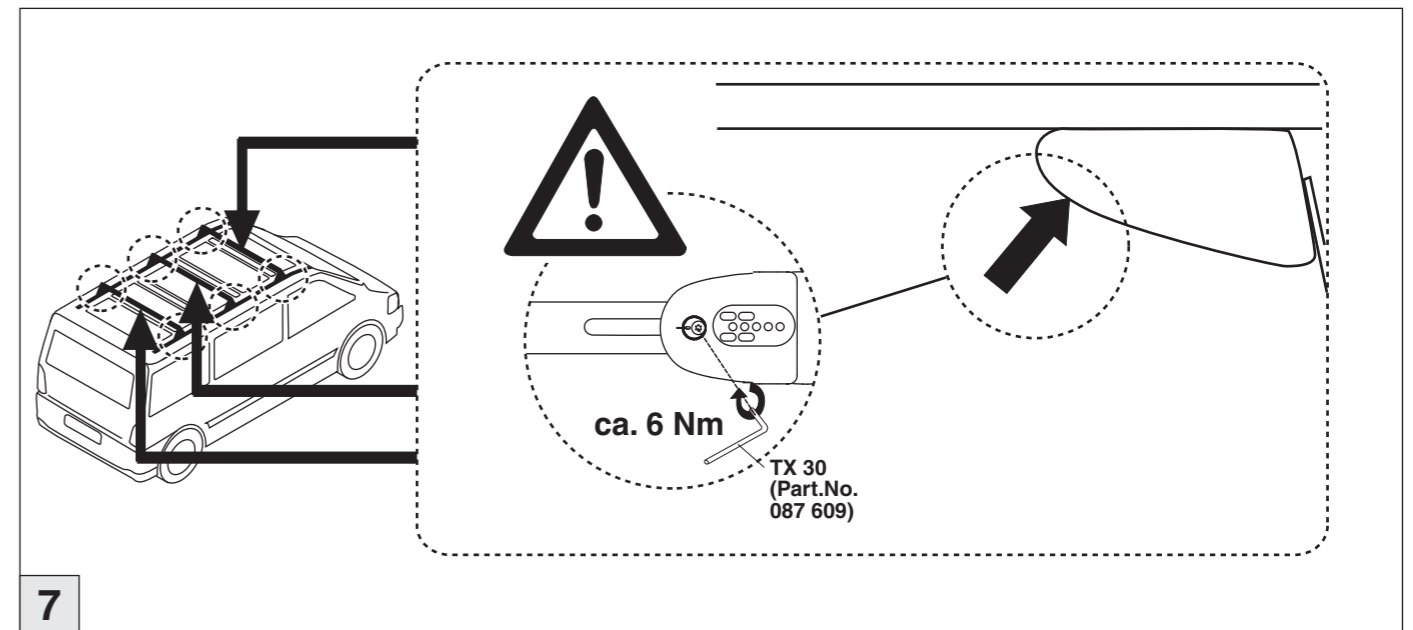
4



5



6



7